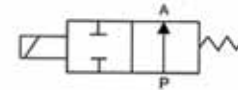


UW Normally Open Series Solenoid Valve Two Way



UW - 10 NO AC110V D

Specification Code

UW : Two position two way solenoid valve (direct drive type)

UWS : Stainless steel 304S two position two way solenoid valve (direct drive type)

Joint Pipe Bore

10: 3/8" 20 : 3/4"

15: 1/2" 25 : 1"

Initial Estate

NO : Normally open

Standard Voltage

DC12V

DC24V

AC24V 50/60Hz

AC110V 50/60Hz

AC220V 50/60Hz

Wiring Form

Blank : Lead wire type

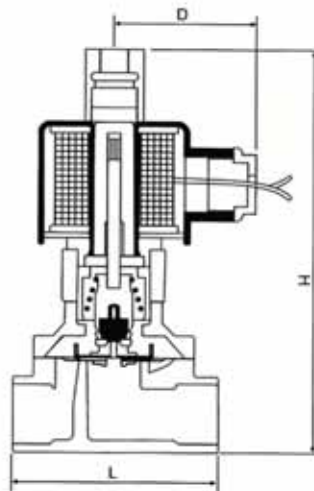
D : Join connector

E : Blast-proof coil

G : Water-proof coil

Specification				
Model	UW-10NO	UW-15NO	UW-20NO	UW-25NO
Working Medium	Air, Water, Oil, Gas			
Motion Pattern	Direct Drive Type			
Type	Normally Open Type			
Aperture of Flow Rate (mm)	16	16	20	25
CV Value	4.8	4.8	7.6	12
Joint Pipe Bore	3/8"	1/2"	3/4"	1"
Operation Fluid Viscosity	20 CST (below)			
Working Pressure (kgf/cm ²)	Water: 0 ~ 5, Air : 0 ~ 7, Oil : 0 ~ 5, Gas : 0 ~ 7			
Max. Pressure Resistance (kgf/cm ²)	10			
Operating Temperature Range (°C)	-50 ~ 80			
Voltage Range	± 10%			
Material of Body	UW: Brass UWS: Stainless Steel 304S			
Material of Oil Seal	NBR, EPDM VITON			

Overall Dimension



Model	L	H	D
UW-10NO	69	116	62
UW-15NO	69	116	62
UW-20NO	73	127	62
UW-25NO	99	135	62